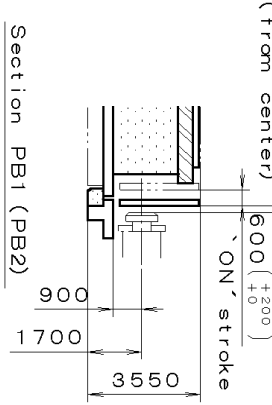
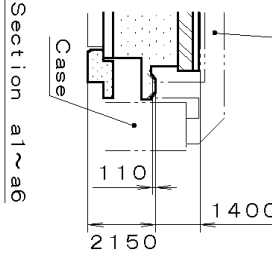
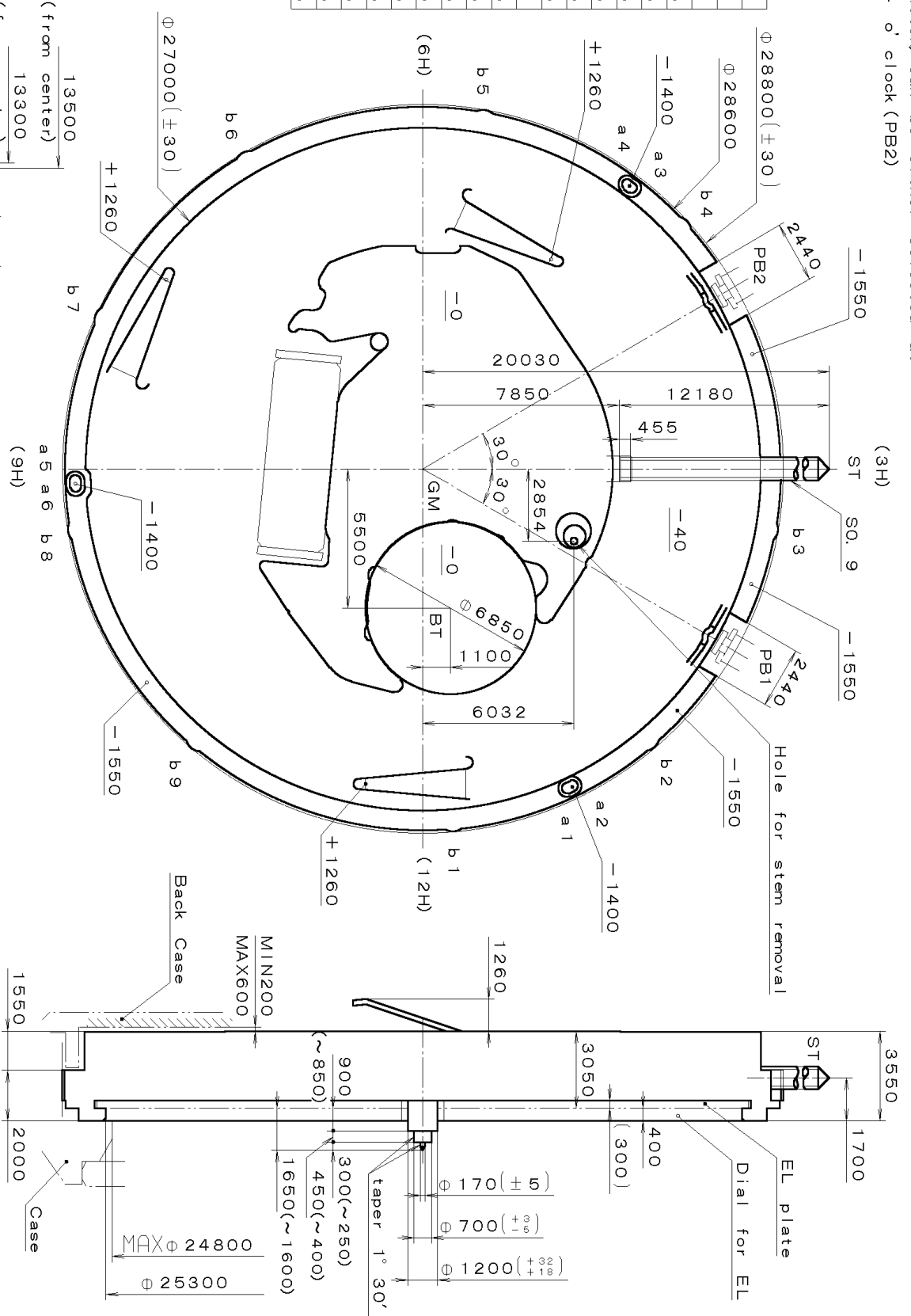


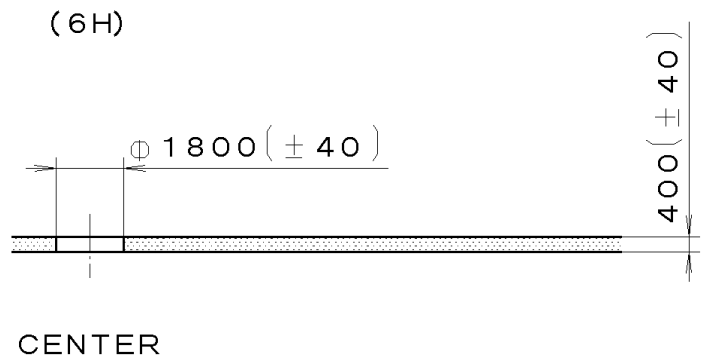
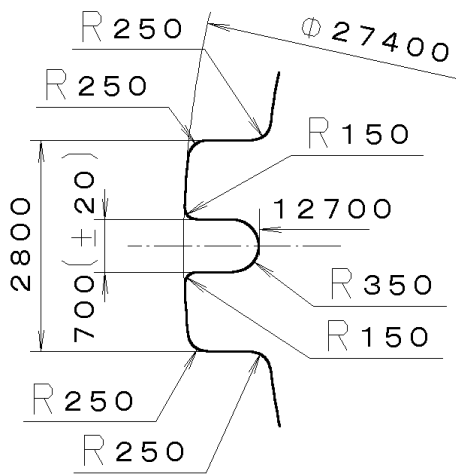
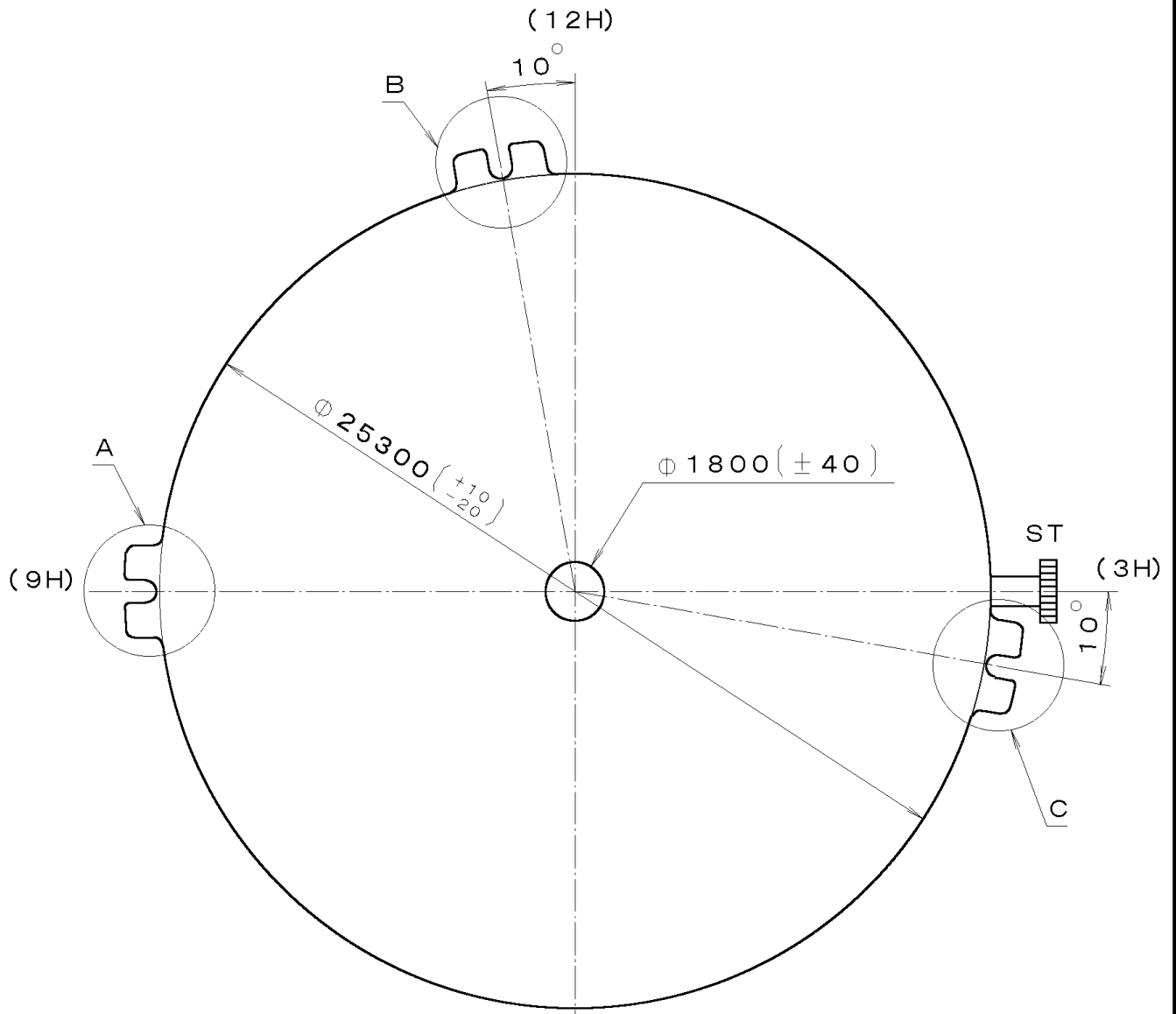
Position of PB (Push Button) can be either selected at 2 o'clock (PB1) or at 4 o'clock (PB2)

Coordinates			
Mark	X	Y	R
GM	0	0	—
a1	12630	5756	370
a2	12528	5975	370
a3	-11085	8353	370
a4	-11229	8159	370
a5	484	-13872	370
a6	726	-13861	370
b1	13747	1203	600
b2	10571	8870	600
b3	2396	13590	600
b4	-9960	10141	600
b5	-13590	2396	600
b6	-11951	-6900	600
b7	-6892	-12507	600
b8	2396	-13590	600
b9	10571	-8870	600



△	Quantity	Unit	1/1000 mm	Call. No. : 6N30
△	Scale	6:1	Parts:	
△	Date	Drawn	Checked	Name: T. Hiruta
△	Approved	Frame for Case	Drawing No. : 6N30C000	
△	Material	General Tolerances		
△	Heat Treatment	Dimensions		
△	Hardness	Angles		
△	Plating			

This drawing is provisional and subject to our reconfirmation and/or revision without notice.



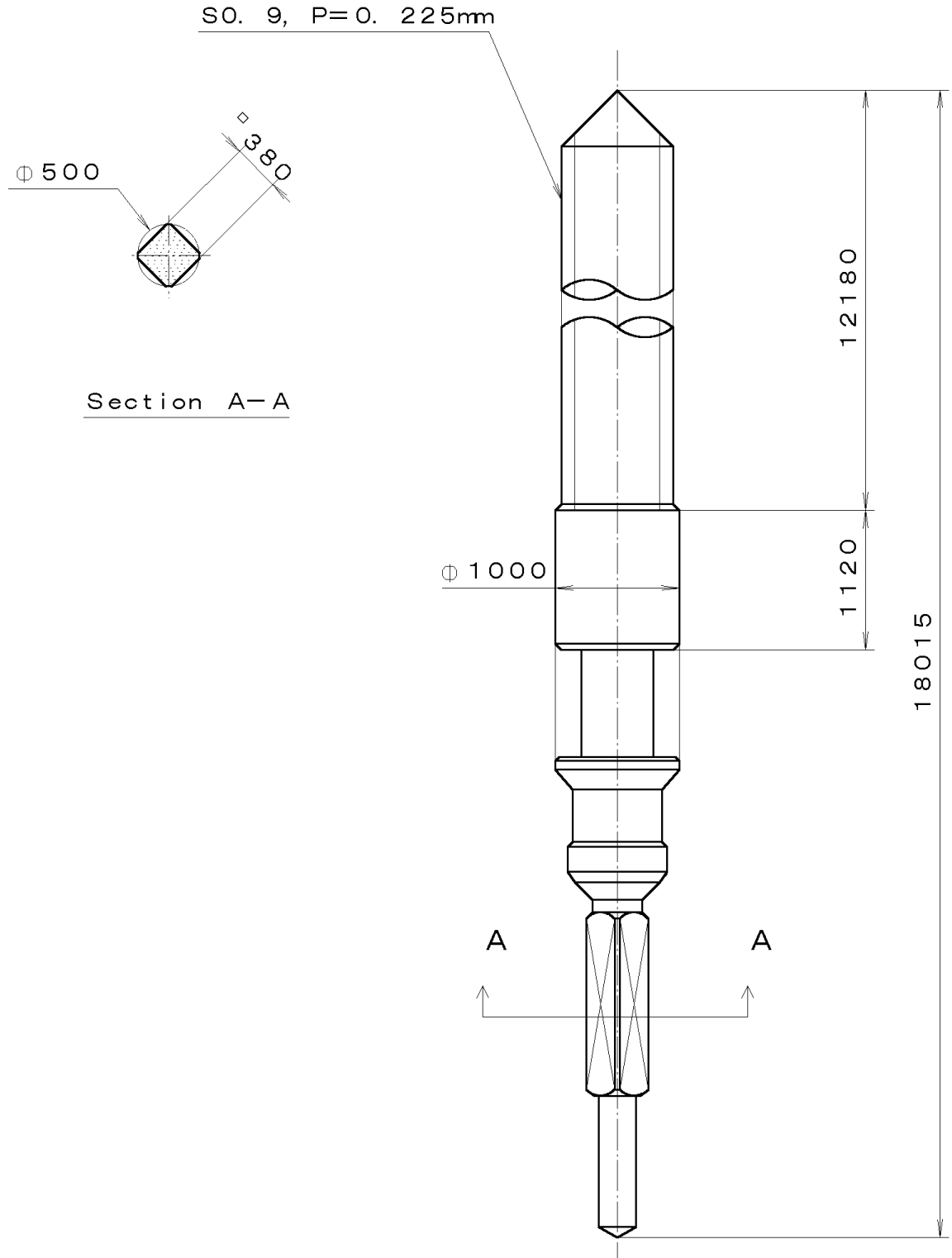
Section A (B, C)

(2100 1121 C-01) 00-07-25
 6N30-00A (01) ***
 *** T I P W

7		Quantity		Cal. No. :	6N30-00A
6		Unit	1/1000 mm	Parts:	
5		Scale	5:1	Name:	Indications for Dial
4		Date		Drawing No. :	
3		Drawn		General Tolerances	
2		Checked	T. Hiruta	Dimensions	
1		Approved		Angles	
Material					
Heat Treatment					
Hardness					
Plating					

This drawing is provisional and subject to our reconfirmation and/or revision without notice.

065-379 (01) *** (2100 1121) 00-06-23



7		Quantity		Cal. No. :
6		Unit	1/1000 mm	Parts:
5		Scale	20:1	
4		Date		
3		Drawn		Name:
2		Checked	T. Hiruta	
1		Approved		SETTING STEM
Material				Drawing No. : 3790S000
Heat Treatment		General Tolerances		
Hardness		Dimensions		
Plating		Angles		